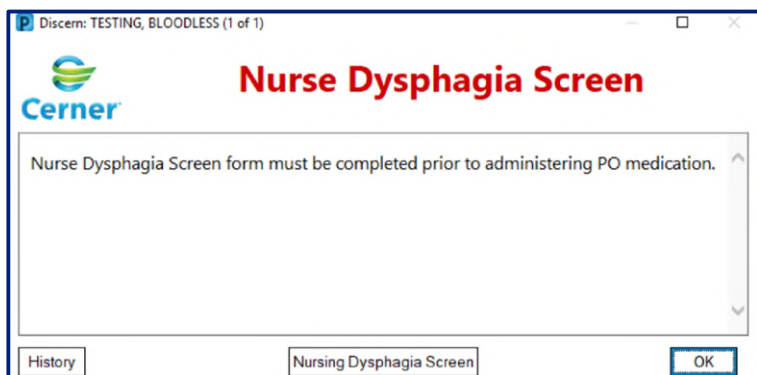


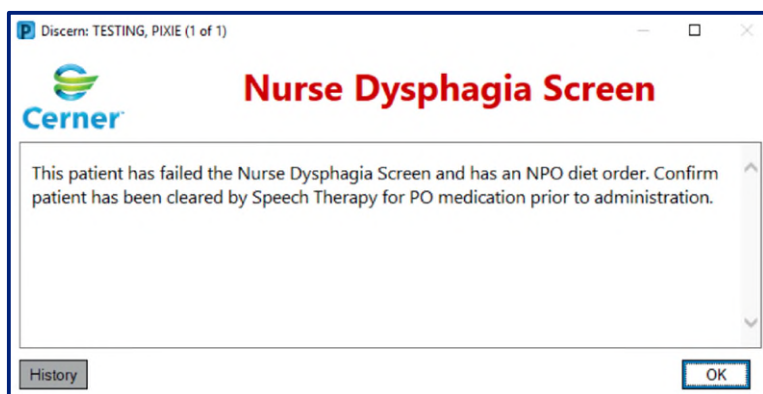
## New Alerts for Nurse Dysphagia Screen

Two new Discern alerts were implemented to notify nursing if they attempt to administer an oral medication to a patient who has the following:

- Active Dysphagia Screen order and no documentation on the Nursing Dysphagia Screen PowerForm.



- Active NPO diet and a failed Nurse Dysphagia Screen.



### In this issue...

<a href="#">New Alerts for Nurse Dysphagia Screen</a>	1
<a href="#">Patient Observer Reminders</a>	1
<a href="#">Pressure Injury Documentation Workflow</a>	2
<a href="#">System Disruptions Reminder</a>	3

## Patient Observer Reminders

- Cerner Patient Observer has built in Privacy Mode. DO NOT move the cameras! If the camera is moved, the CPO Tech needs to restart the onboarding process over again which delays patient care.
- To get the CPO Tech’s attention, stand in front of the camera, wave your hand, and say your location. For example, “Hi it’s Molly at EMMC, room 518.”
- Be mindful that each CPO Tech can be observing up to 12 patients at a time. They may have patient(s) requiring redirection at the same time you are trying to get their attention. It may take them a few seconds to get back to you. Waving at the camera and saying your location is the best way for them to determine which camera is talking to them. Please be patient!

## Pressure Injury Documentation Workflow

If a Pressure Injury is suspected, **Pressure Injury – Suspected** should be selected in **Abnormality Type** once the Incision/Wound/Skin dynamic group has been created.

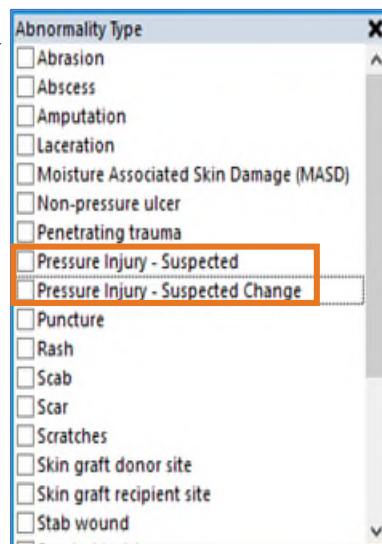
A task goes to the Wound/Ostomy nurse or clinician every time **Pressure Injury – Suspected** is documented.

The Wound/Ostomy nurse or clinician validates the pressure injury and in **Abnormality Type** selects **Validated for Pressure Injury** and completes the remaining wound assessment.

The floor nurse who documents next on the Incision/Wound/Skin dynamic group sees the following information populate in the dynamic group:

- Type
- Wound Validator Role (nurse, therapies, or provider)
- Validator Name
- Validated Pressure Injury
- Pressure Injury on Admission
- Pressure Injury Stage

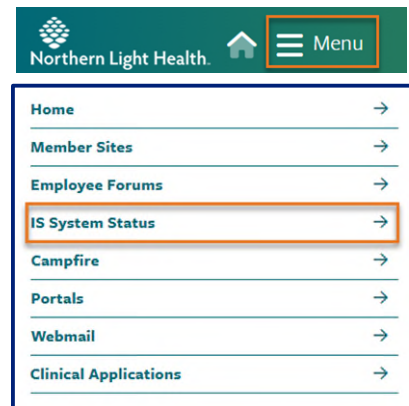
The floor nurse should NOT change these documentation fields. If the wound has changed, the floor nurse would change the Abnormality Type to **Pressure Injury – Suspected Change**. This sends a new task to the Wound/Ostomy nurse or clinician to see the patient for re-evaluation of the wound.



## System Disruptions Reminder

### Disruptions/Downtime/Performance Issues:

- If unexpected disruptions/downtime/performance issues occur, check the NLH Intranet IS System Status page to see if the issue is posted, if not, contact the Help Desk.
  - Click **Menu** on the top of the Home Intranet page.
  - Click **IS System** Status to open.
- Often issues may be resolved quickly and they are not reported on the IS System Status page.
- Information on the IS System Status page includes the identified issue, workarounds, and approximate resolution time (if known), and is updated as more information is obtained.



### Routine Maintenance:

- Oracle Cerner regularly schedules and facilitates routine maintenance. These events may require a service disruption or downtime. You will be notified in advance if a planned disruption or downtime is required.
- Capacity Management and Transfer Center undergo weekly maintenance (Wednesday PM – Thursday AM).

**Tip:** Bookmark the [IS System Status](#) page for quick access to view reported issues.