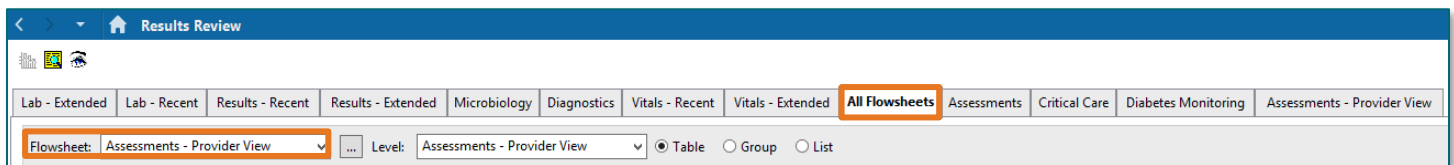


Results Review offers a location to view patient results and documentation that has occurred. Results Review is made up of Flowsheets that consist of multiple folders with patient data in them. Tabs across the top of Results Review open to specific flowsheets. Results Review has been updated to improve the efficiency of locating patient data with the addition of new flowsheets to align with new solutions that have been implemented. Some flowsheets have a name change to correspond with PowerChart Views. Flowsheets no longer being used have been retired; however, no data loss in Results Review has occurred with this work.

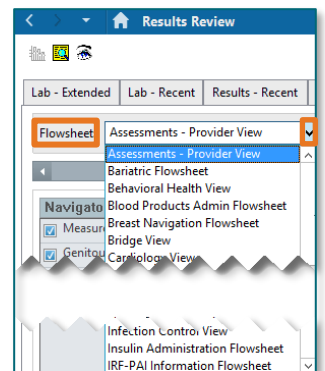
## Using Results Review

The tabs across Results Review open a specific flowsheet when selected. All Flowsheets is a new tab that defaults to the Assessments – Provider View, which is also a new flowsheet.



### ➤ Flowsheet Filter

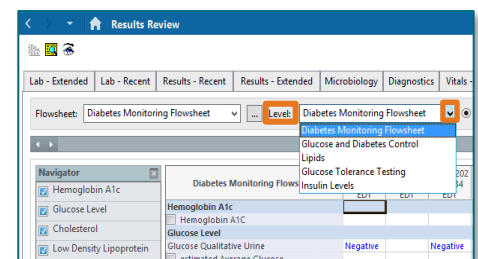
- Some flowsheets allow the user to use the Flowsheet filter to select a different flowsheet.
- Click the Flowsheet Filter drop down to open the list of available flowsheets.
- Scroll to desired flowsheet and click the name to select it.



**NOTE:** Every flowsheet available can be accessed from All Flowsheets.

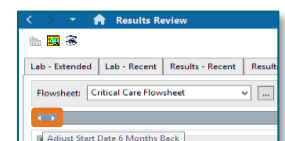
### ➤ Level Filter

- Click the Level filter drop down to select a specific folder within the flowsheet to display in the Navigator menu.
- The number of folders available in the Level filter will vary from flowsheet to flowsheet.

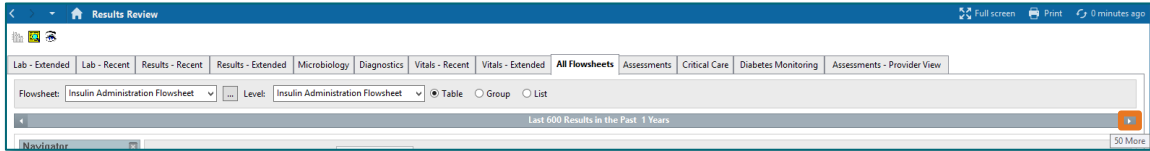


### ➤ Changing the Timeframe

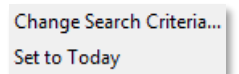
- To pull in more data, click the backward arrow on the left side of the gray bar to adjust the start time. Depending on the flowsheet, an additional day, three, or six months of data will pull in with each click.



- Some flowsheets will have only one arrow on the left and right side of the gray bar. To pull in more data, click the arrow on the right side to bring in 50 more results with each click.

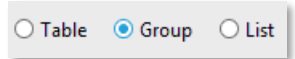


- Right-clicking the gray bar will provide the option to select **Change Search Criteria** or **Set to Today** to see only today's results.
  - Change Search Criteria** allows the user to define the search by Clinical or Posting range, Result count, New Results or Admission date to current date.



➤ **Changing How Data is Viewed**

- Results Review defaults to Table. If desired, results can be grouped or displayed in a list.



**Renamed Flowsheets**

Some flowsheets were renamed to align with the PowerChart view; no content was changed.

Current Flowsheet Name	New Name of the Flowsheet
Anesthesia Flowsheet	Anesthesia Results
Behavioral Health Documentation FS	Behavioral Health View
Cardiology Flowsheet	Cardiology View
Fall Risk Assessment Flowsheet	Falls View Adult
	Falls View Pediatric
Nutrition Screen Flowsheet	Nutrition View
OB/GYN Flowsheet	Obstetrics View
Orthopedic Flowsheet	Orthopedic View
Pain Documentation Flowsheet	Pain Adult View
	Pain Pediatric View
	Pain Neonate View
Pathology Report Components	Pathology View
Perioperative Specialty View	Perioperative View
Quality Indicators Flowsheet	Quality Measures View

## Retired Flowsheets

In an effort to clean up Results Review, some flowsheets not being used have been retired.

**NOTE:** No data was removed from Results Review with the retired flowsheets. The content within them can be located in other flowsheets in Results Review.

## New Flowsheets

Additional flowsheets have been added to provide an easy way to view specific data. Some of the new flowsheets have been added to view data from the new solutions in PowerChart, for example Bridge.

Ambulatory POC Flowsheet	Metabolic Monitoring View
Ambulatory View	OT Outcome Measures View
Anesthesiology View	Patient History View
Assessments – Provider View	PCP Specialty Flowsheet
Antepartum Record	Preventive Screenings Flowsheet
Anticoagulation Dosing Flowsheet	PT Outcome Measures View
Assessments – Provider View	Quick View
Bridge View	Restraint View
Discharge Planning View	SLP Outcome Measures
Education View	Social Determinants Reporting
Lactation Record	VTE Advisor
Lymphedema Measurements FS	