

On November 2, the Behavioral Health Quality Measures tools will be implemented to support monitoring and meeting of quality measures for Inpatient level of care. These measures will be available for monitoring by Providers, Clinicians, Nursing and Medical Assistants.

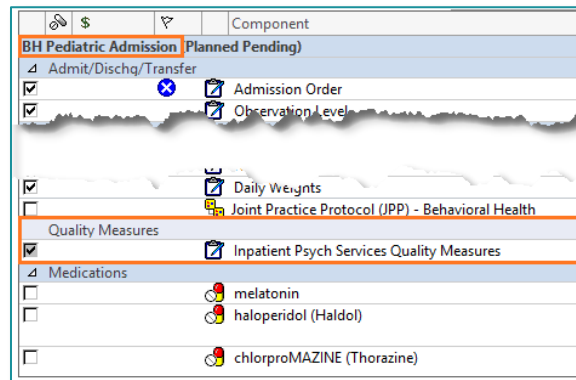
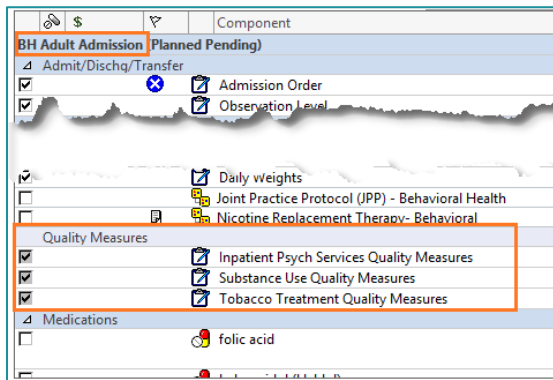
### Areas of focus for the Inpatient areas

- Inpatient Psych Services (HBIPS)
- Substance Use (SUB)
- Tobacco Use (TOB)

Nursing, Clinicians and Providers will track progress via the Quality Measures component that is on the Nurse, Therapy and Providers Views. All measures are part of the Discharge Quality Measure component.

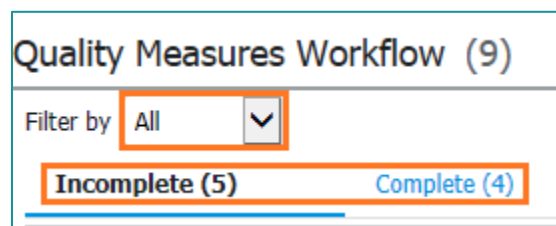
### Ordering the Quality Measures

Upon admission, the quality measures will be ordered as part of the BH Admission PowerPlans.



### Quality Measures Workflow component

Based on the documentation performed at admission and throughout the patients treatment, the measures will display by Incomplete or Complete within the component. These measures are linked to documentation that is performed by nursing and clinicians. Filtering is also available to set if only one measure at a time would like to be viewed.



➤ **Status**

- Will display when the measure was documented for the patient. If the measure still has an action that needs to be taken, the status will be blank indicating further action is needed.

➤ **Actions**

- When further action is needed for a measure, the action button will be active. Selecting the action button will populate the necessary area of the chart that will allow staff to complete that action. If there is no action required, this will be indicated stating no actions applicable at this time.

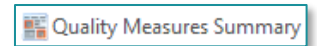
The screenshot shows a 'Quality Measures Workflow (9)' window. It has a 'Filter by' dropdown set to 'All'. Below the filter, there are two tabs: 'Incomplete (5)' and 'Complete (4)'. The main table has columns for 'Measure Task', 'Status', and 'Actions'. The table is organized into several sections, each starting with a collapsed header:

- SUB Alcohol Use Brief Intervention**
  - Alcohol Use Status: Status is '--', Action is 'Document'.
  - Intervention: Status is '--', Action is 'No actions applicable at this time'.
- TOB Tobacco Use Treatment During Hospital Stay**
  - Tobacco Use Status: Status is 'Documented, October 21, 2020 06:03:56', Action is '--'.
  - Cessation Medication: Status is '--', Actions are 'Order' and 'Contraindicate'.
  - Cessation Counseling: Status is '--', Action is 'Document'.
- TOB Tobacco Use Treatment at Discharge**
  - Cessation Medication: Status is '--', Actions are 'Prescribe' and 'Contraindicate'.
  - Cessation Counseling: Status is '--', Action is 'Document'.
- HBIPS Admission Screening Within 3 Days of Admit**
  - Violence Risk Self: Status is '--', Action is 'Document'.
  - Violence Risk Others: Status is '--', Action is 'Document'.
  - Substance Use: Status is 'Documented, October 21, 2020 06:04:03', Action is '--'.
  - Psychological Trauma: Status is '--', Action is 'Document'.
  - Patient Strengths: Status is '--', Action is 'Document'.
- HBIPS Patient Status at Discharge**
  - Status at Discharge: Status is '--', Action is 'Document'.

- **Order:** Will bring you to the order catalog to allow an order to be placed.
- **Contraindicate:** Will allow for contraindication documentation.
- **Document:** Will link to the area of documentation necessary to designated location in the patient chart.
- **Prescribe:** Will link to the Discharge Medication Reconciliation to place a prescription order for the patient.

## Quality Measures Summary

The Quality Measures Summary button on the toolbar is a dashboard for monitoring documentation pertaining to quality measures and allows the teams to view the measures for each patient on the unit. Information is compiled from orders and documentation.



Patient Demographics			HBIPS		- SUB				
Name	Date Of Birth	FIN	Inpatient	Discharge	Status	Inpatient	Discharge	Status	
[+] TESTING, AC2018	02/21/1986	256313370			Ordered			Ordered	
[+] TESTING, JOSH6	07/07/1977	256332024	N/A	N/A	N/A	N/A	N/A	N/A	
[+] TESTING, ROBERTA	03/22/2016	256284852			Ordered	N/A	N/A	N/A	

### ➤ List

- Allows for the patient list to be selected, this is user specific according to the patient lists that have been created.

### ➤ Quality Measures Condition

- Allows for filtering of a specific quality measure to be the only measure on view.

### ➤ Expanding and collapsing

- The plus and minus sign within the summary view will allow for each measure to be viewed or specific ones at the same time. When expanded, multiple icons will be seen:
  - Full blue circle reflects all documentation is complete.
  - Partially filled circle reflects some documentation is complete.
  - Empty circle reflects no documentation has been completed.
  - Clock reflects time-sensitive measures are incomplete.

	All required documentation related to the measures has been completed.
	Some, but not all, of the documentation for the set has been completed.
	There has been no documentation for the measures in the set.
	At least one of the measures in the measure set is time-sensitive and incomplete.

**NOTE:** Hovering over an icon will provide more information and allow Providers to also take action on a measure if necessary, similar to the actions they would perform within the component on the workflow page in each patient's chart.