

Image Area Mark Up Tools enable staff to calibrate images, take measurements, highlight, and/or annotate areas with arrows or text. Mark ups can be hidden, modified, or deleted.

Go to <https://ci.northernlighthouse.org/pacs> for the dates these workflows will be implemented at your organization.

## Imaging Area Mark Up Tools

### ➤ Mark Up Tools Menu

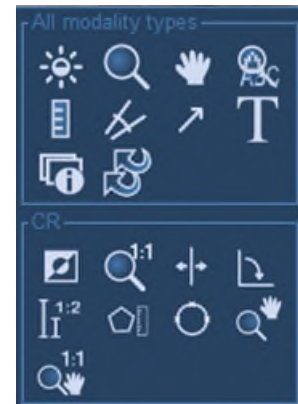
**STEP 1:** Select exam from task list to display image.

**STEP 2:** Right-click anywhere on the image to access the tool menu.

**STEP 3:** Left-click to select desired tool.

- The selected tool attaches its icon to the **arrow**.

**STEP 4:** Right-click to deactivate tool.



### ➤ Image Measurements

**STEP 1:** Right-click anywhere on the image to access the tool menu.

**STEP 2:** Left-click the **ruler** icon.

**STEP 3:** Left-click to use tool at starting point of measurement.

**STEP 4:** Move the mouse from the measurement start point to the end point.

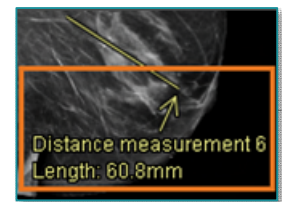
**NOTE:** Do not click. Hold and drag to create a measurement.

**STEP 5:** Left-click at the end point to conclude the measurement.

- Measurements display with an arrow indicating end point and measurement calculation.

**STEP 6:** Right-click to deactivate the ruler when measurement is complete.

- Imaging Mark Up Tools auto track number of measurements taken for each image.



### ➤ Deleting a Measurement

**STEP 1:** Right-click directly on the **measurement** line.

**STEP 2:** Select **Delete**.

➤ **Configuring a Default Tool**

**STEP 1:** Follow **Steps 1-6** above to select the ruler tool, create a measurement, and then deactivate the tool.

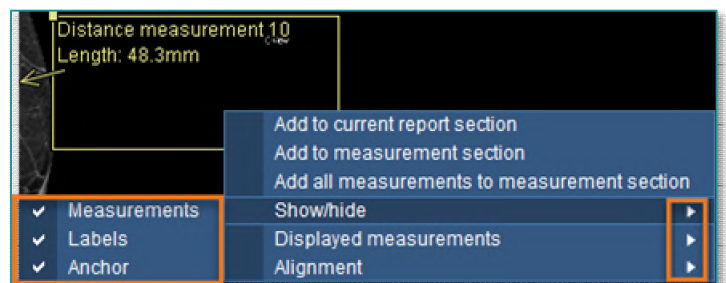
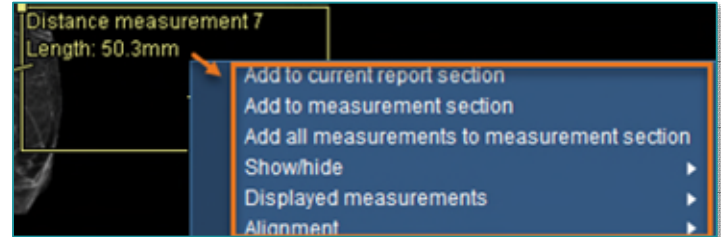
**STEP 2:** Hover over the measurement text to highlight.

**STEP 3:** Left-click to enable enhanced measurement indicated by a **yellow box**.

**STEP 4:** Right-click for more tools.

**STEP 5:** Select **side arrow** to see additional options.

**STEP 6:** Select or deselect desired options.



**NOTE:** These measurements are set as the user's default and do not have to be changed again.

➤ **Adding Text Annotation**

**STEP 1:** Right-click anywhere in the image to open tools menu.

**STEP 2:** Left-click the **T** icon.

- The **T** icon attaches to the arrow.

**STEP 3:** Move the arrow on the image where text is to be added.

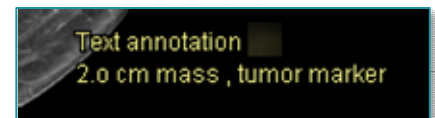
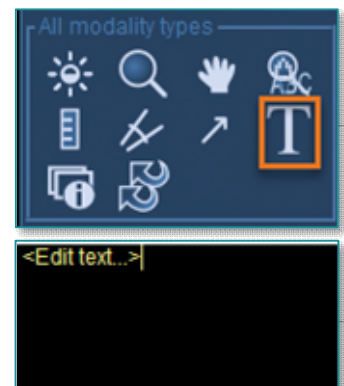
- Once **Annotation** is created, it can't be moved.

**STEP 4:** Left-click to open **Text box**.

**STEP 5:** Free text **Annotation**.

**STEP 6:** Right-click to deactivate **Text** tool.

- Only text annotation and comments display on image.



➤ **Deleting a Text Annotation**

**STEP 1:** Right-click **annotation**.

**STEP 2:** Select **Delete**.

