

Designating a personalized printer and fax location list in the Manual Expedite tool reduces scrolling by creating a manageable output locations list. The steps outlined below will show how to add printers, fax locations, setting output device default favorites as well as non-default locations.

Setting Manual Expedite Printer and Fax Favorites

➤ Setting Manual Expedite Printer Favorites

STEP 1: Select a patient.

STEP 2: Select the Manual Expedite (ME) icon on the Order Viewer (OV) toolbar.



STEP 3: Select Printers from Print to Options.

STEP 4: Right-click in the Output devices field.

- Hover over Filter Type.

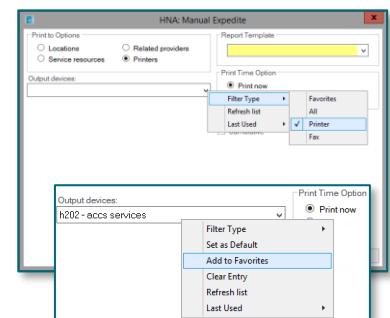
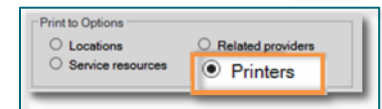
STEP 5: Select Printer.

- Locate the printer to be added.

STEP 6: Right-click the selected Printer.

STEP 7: Select Add to Favorites.

- Repeat for all the printers you would like to add.



➤ Setting Manual Expedite Fax Favorites

STEP 1: Right-click the Output devices field.

- Hover over Filter Type.

STEP 2: Select Fax.

- Locate the Fax location to be added.

STEP 3: Repeat Steps 6 through 7 above for instruction on how to add fax location(s) favorites.

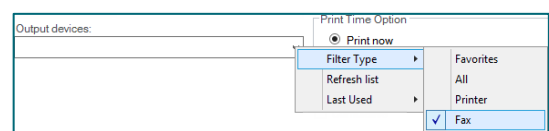
➤ Setting Printer and Fax list as Default Expedite Fax Favorites

STEP 1: Right-click the Output devices field

- Hover over Filter Type.

STEP 2: Select Favorites.

- Output devices will default open to the Favorites List.



➤ **Locating a Printer or Fax location not listed in Favorites list**

STEP 1: Right-click the **Output devices** field.

- Hover over **Filter Type**.

STEP 2: Select **All**.

STEP 3: Locate the printer or fax location to be added.

STEP 4: Select **OK**.

