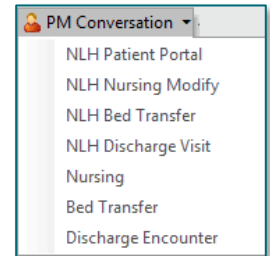


The options available in the PM Conversation drop-down in PowerChart and FirstNet will be updated to accommodate the hybrid state for clinical positions for the Maine Coast Hospital Cerner Conversion. This update will affect all Member Hospitals.

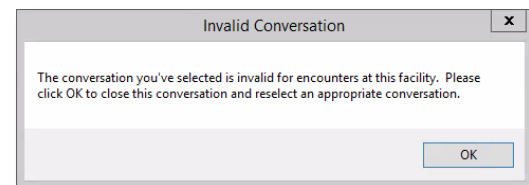
### PowerChart Updates

- The options available in **PM Conversation** will be updated. The drop-down list will include selections specific to **NL Maine Coast Hospital**.
- The list of choices will vary based on the user's position, however, any option beginning with **NLH** is to be used by **all locations other than NL Maine Coast Hospital**.
- The exception to this rule is the **NLH Patient Portal conversation**, which will be used by all organizations.



| Old Options         | New Options<br>(all locations <b>except</b> Maine Coast) | NL Maine Coast Hospital |
|---------------------|--|-------------------------|
| Modify Encounter    | NLH Nursing Modify                                       | Nursing                 |
| Transfer Encounter  | NLH Bed Transfer   | Bed Transfer            |
| Patient Portal      | NLH Patient Portal                                       | NLH Patient Portal      |
| View Encounter      | NLH View Encounter                                       | View Encounter          |
| Discharge Encounter | NLH Discharge Visit                                      | Discharge Encounter     |

**NOTE:** When staff select a conversation option that is not active for their facility will receive the **Invalid Conversation** alert. Staff should click **OK** to close the conversation and select the appropriate conversation option for your location.



### FirstNet Updates

- **Emergency Department Nurses** will receive an **Available Conversations** window when discharging or transferring a patient from the ED Nursing Workflow MPage.
- **NL Walk-In Care Ellsworth** will see **Discharge Encounter** upon discharging patients from WIC LaunchPoint.
- All other **Member Organization Walk-In Care Clinics** will see the **NLH Discharge Visit** from the right-click menu.

