



## Office of Clinical Informatics

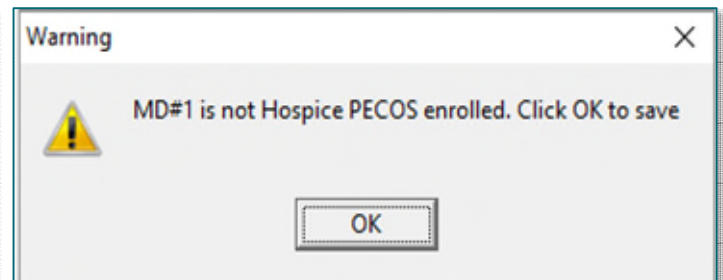
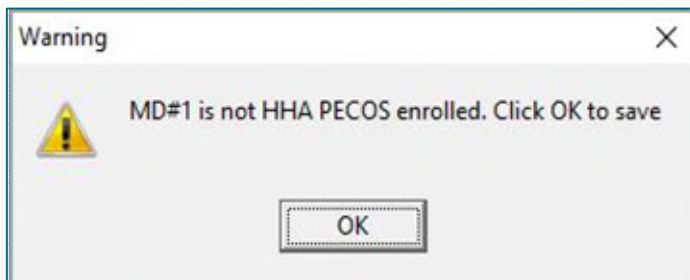
### Netsmart EHR Updates

## Netsmart MD#1 PECOS Enrollment Check

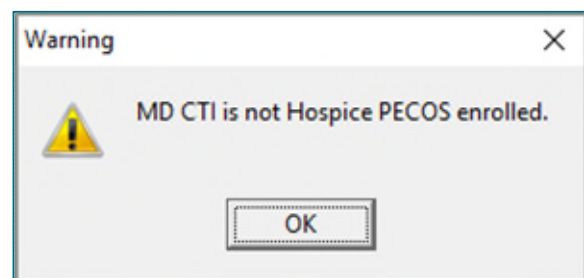
On **Thursday, March 28, 2024**, when MD#1 is added or changed on the Admissions & Status screen, the system will check if the **Provider is PECOS enrolled** which will allow the organization to bill for services. If a **Provider is not PECOS enrolled**, a **warning** will appear notifying the user.

### Warnings when Provider is not PECOS enrolled

- Choosing **OK** will allow adding the Provider. If the payer does not allow a Provider to oversee care without being PECOS enrolled, MD#1 should be changed.



- A warning will also appear if MD CTI is not PECOS enrolled.



Clinical Informatics – This information has been sent to all **NL HC&H Field Clinicians and NL HC&H Clinical Leaders**. Please make this a topic of discussion during upcoming rounding.

[Please direct any questions to the Clinical Informatics team using this link.](#)

*This email has been sent vis BCC to the following:*

*#VNA-Bangor-Office Support*

*#VNA-Caribou Houlton Office Support Staff*

*#VNA-Ellsworth-Office Support*

*#VNA-Portland-Office Support*

*#VNA-Waterville-Office Support*