

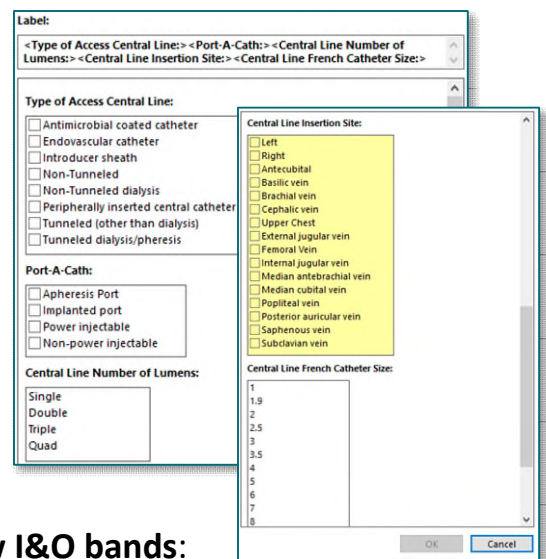


Dialysis Central Line and AV Fistula/Graft Documentation Update

On **Tuesday, April 30**, Dialysis will begin using the **Central Line** dynamic group that is used by Acute Nursing and the **Arteriovenous Access** dynamic group is being replaced by the **AV Fistula/Graft** dynamic group. **Dialysis** and **Acute Nursing** will document within the same dynamic groups making documentation visible for both areas.

Central Line Dynamic Group

The displayed **Central Line Dynamic Group** will replace the current one in the **Vascular Access** section located within the **Dialysis iView** band.

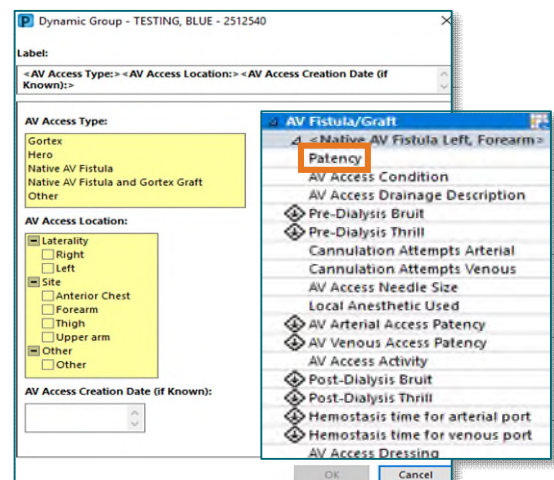


AV Fistula/Graft Dynamic Group

The **Arteriovenous Access Dynamic Group** is being replaced by the **AV Fistula/Graft Dynamic Group** in the following **Lines Devices Procedures Interactive View I&O** bands:

- Adult Critical Care Lines Devices Procedures
- Pediatric Lines Devices Procedures
- PICU Lines Devices Procedures
- Periop Lines Devices Procedures
- Periop Quick View
- ED Lines Devices Procedures

Patency has been added to the **AV Fistula/Graft Dynamic Group** to be used by Acute Nursing staff to document the bruit and thrill.



Clinical Informatics – Please share this information with **Dialysis, ED, Inpatient, and Periop Nursing Staff** and make this a topic of discussion in upcoming rounding.

***Behavioral Health:** This information **does not** affect behavioral health caregivers.*

[Please direct any questions to the Clinical Informatics team using this link.](#)